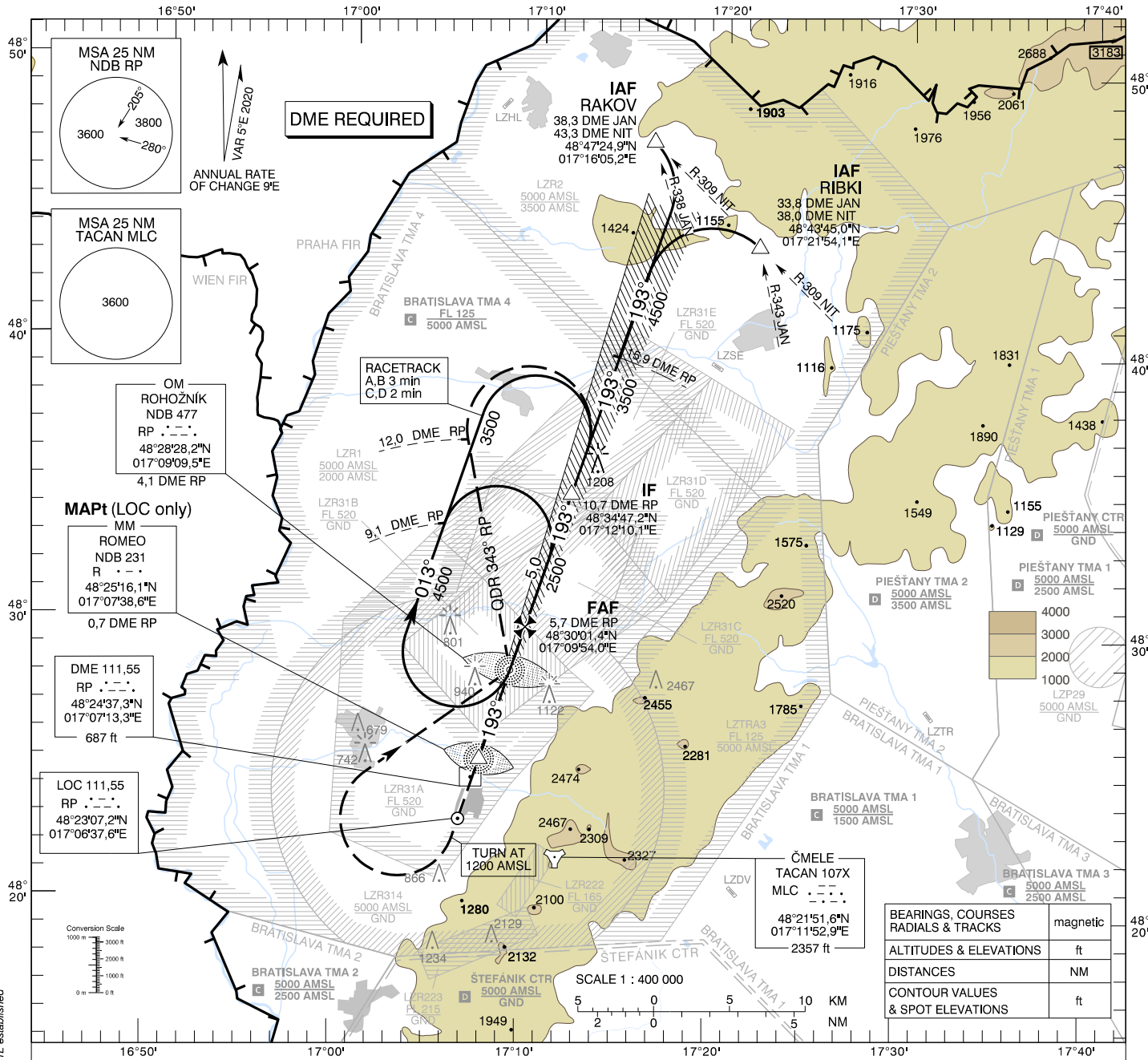


**INSTRUMENT
APPROACH
CHART - ICAO**

TRANSITION ALTITUDE
10 000 ft
AD ELEV 689 - 25 hPa
THR RWY 19 ELEV 686,4 - 25 hPa

MALACKY RADAR 120,750 (259,625)
MALACKY TOWER 129,575 (120,750)

MALACKY (LZMC)
ILS CAT I or LOC RWY 19
ACFT CAT A/B/C/D



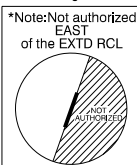
MISSED APPROACH

Climb STRAIGHT AHEAD, at 1200 AMSL turn RIGHT to NDB RP, climbing to 3500 AMSL. At NDB RP turn LEFT to track 343° (QDR 343° RP), at 12 DME RP turn RIGHT to join the hold or initiate another approach. MAX IAS 185 kt. No turn before MM.

ILS RDH 56,8

THR RWY 19 ELEV 686,4 - 25 hPa
NM to/from THR RWY 19

OCA (OCH)	ASC	A	B	C	D	
Straight - in Approach	CAT I	2,5% ft 943 (257)	955 (269)	963 (277)	974 (288)	
	LOC	4,0% ft 918 (232)	930 (244)	938 (252)	949 (263)	
Circling (* see Note)		2,5% ft	1110 (421)			
		ft	1120 (431)	1190 (501)	1650 (961)	1810 (1121)
VIS		m	1800	2800	3600	4600



DME RP	NM	5,0	4,0	3,0	2,0	1,0
ALTITUDES	ft	2275	1957	1638	1320	1001

Ground speed	kt	70	90	100	120	140	160
FAF - MAPt (5,0 NM)	min:sec	4:17	3:20	3:00	2:30	2:09	1:53
Rate of descent (5,2%)	ft/mh	372	478	531	637	743	849

Timing not authorized for defining the MAPt.

CHANGES: LZR131A and LZR131B withdrawn, new LZR31A, LZR31B, LZR31C, LZR31D, LZR31E established