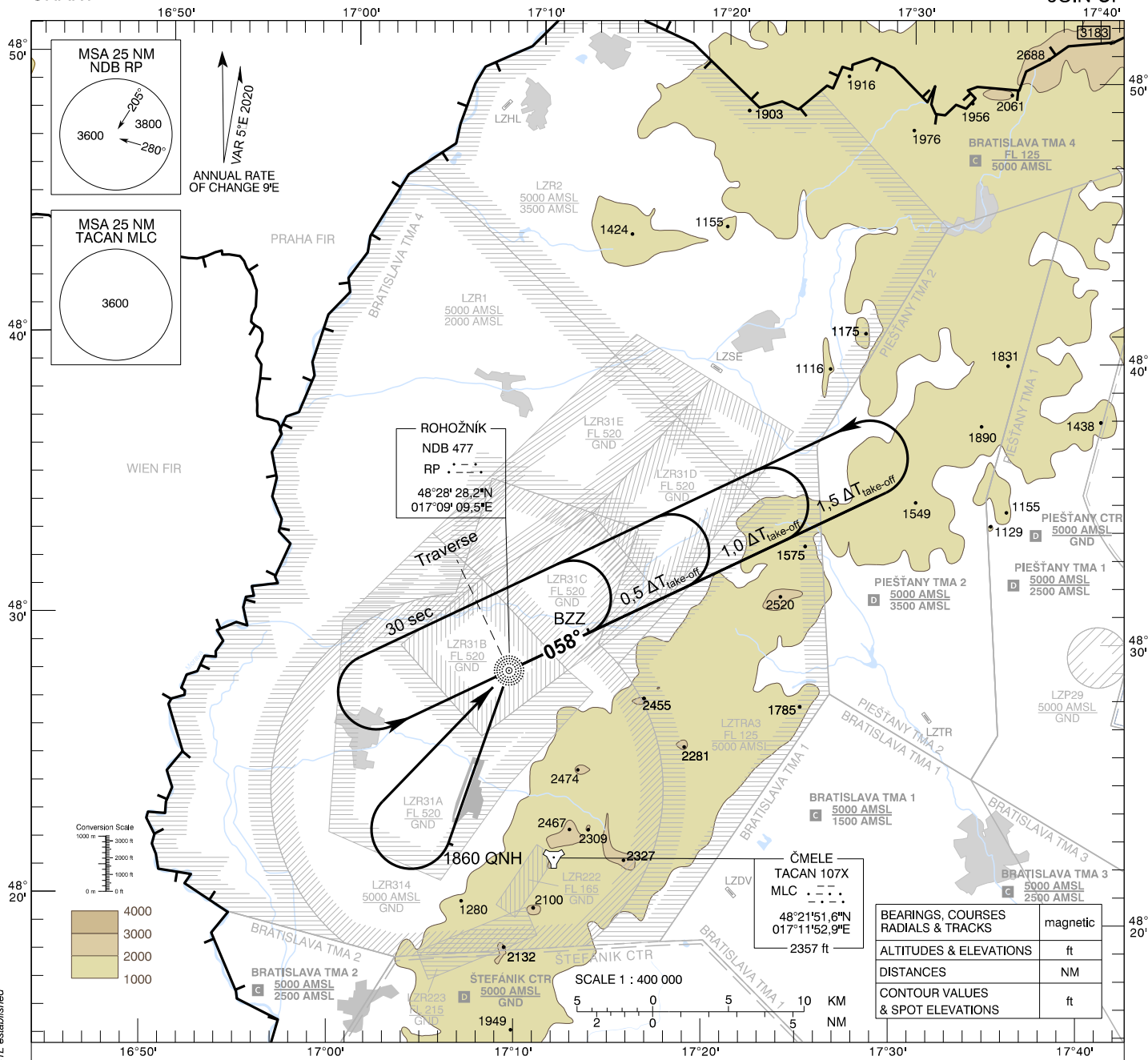


OAT SPECIAL PROCEDURES CHART

TRANSITION ALTITUDE
10 000 ft
AD ELEV 689 - 25 hPa

MALACKY RADAR 120,750 (259,625)
MALACKY TOWER 129,575 (120,750)

MALACKY (LZMC) FORMATION JOIN-UP



$\Delta t_{\text{take-off}}$	interval of take-off
BZZ	start point of formation join-up, at the distance Sh, when climbing to join-up height Hz

PROFILE VIEW N/A

BEARINGS, COURSES RADIALS & TRACKS	magnetic
ALTITUDES & ELEVATIONS	ft
DISTANCES	NM
CONTOUR VALUES & SPOT ELEVATIONS	ft

CHANGES: LZR131A and LZR131B withdrawn, new LZR31A, LZR31B, LZR31C, LZR31D, LZR31E established