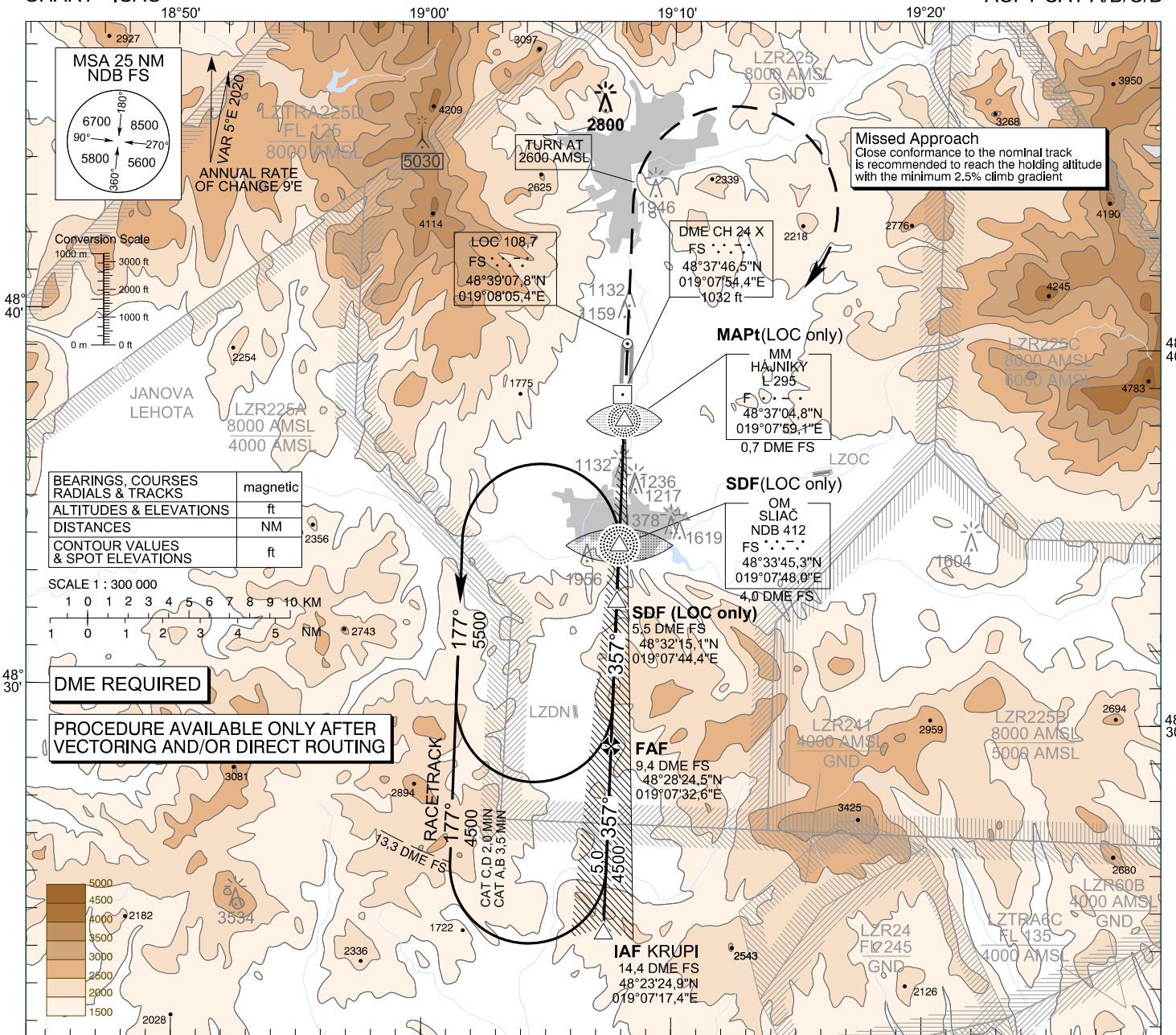


**INSTRUMENT
APPROACH
CHART - ICAO**

TRANSITION ALTITUDE
10 000 ft
AD ELEV 1044,0 - 38 hPa
THR RWY 36 ELEV 1014,5 - 37 hPa

SLIAČ APPROACH/RADAR 119,155
SLIAČ TOWER 122,905

**SLIAČ (LZSL)
ILS CAT I or LOC Y RWY 36
ACFT CAT A/B/C/D**

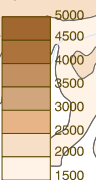
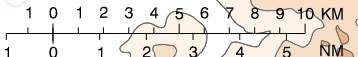


DME REQUIRED

**PROCEDURE AVAILABLE ONLY AFTER
VECTORIZING AND/OR DIRECT ROUTING**

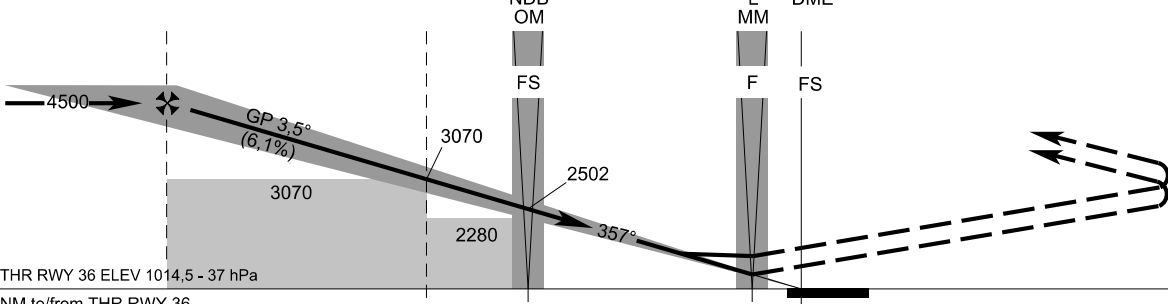
BEARINGS, COURSES RADIALS & TRACKS	magnetic
ALTITUDES & ELEVATIONS	ft
DISTANCES	NM
CONTOUR VALUES & SPOT ELEVATIONS	ft

SCALE 1 : 300 000



18°50' 19°00' 19°10' 19°20'

9,4 DME FS FAF 5,5 DME FS SDF (LOC only) 4,0 DME FS SDF (LOC only) 0,7 DME FS MAPt (LOC only) DME



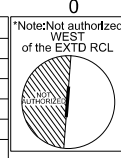
MISSED APPROACH

Climb STRAIGHT AHEAD, at 2600 AMSL turn RIGHT to NDB FS, climbing to 5500 AMSL and hold. MAX IAS 210 kt until established on track to NDB FS. No turn before MM.

ILS RDH 51,5

THR RWY 36 ELEV 1014,5 - 37 hPa
NM to/from THR RWY 36

Straight-In Approach	OCA (OCH)	ASC	A				B				C				D					
			2.5%	5.0%	2.5%	5.0%	2.5%	5.0%	2.5%	5.0%	2.5%	5.0%	2.5%	5.0%	2.5%	5.0%				
CAT I	without SDF	ft	1763 (749)	1777 (763)	1787 (773)	1800 (786)	1186 (172)	1202 (188)	1220 (206)	3070 (2056)	1940 (926)	3070 (2056)	1520 (506)	2410 (1366)	2810 (1766)	2840 (1796)				
	with SDF	ft																		
LOC	without SDF	ft																		
	with SDF	ft																		
Circling (* see Note)		ft																		



DME FS	NM	9,0	8,0	7,0	6,0	5,0	4,0	3,0	2,0
ALTITUDES	ft	4361	3989	3617	3246	2874	2502	2131	1759
Ground speed	kt		70	90	100	120	140	160	180
FAF - MAPt (8,7 NM)	min:sec		7:27	5:47	5:13	4:20	3:43	3:15	2:54
Rate of descent (6,1%)	ft/min		434	557	619	743	867	991	1115

Timing not authorized for defining the MAPt

CHANGES: lateral limits of LZR241